



# TH407

## Telehandler



## SPECIFICATIONS

### Engine

Engine Model	
Standard	Cat® C4.4 DITAAC
Optional	Cat® C4.4 DITAAC ACERT
Gross Power	
Standard	74.5 kW/101 hp
Optional	93 kW/126 hp
Maximum Torque	
Standard	410 Nm/1400 rpm
Optional	499 Nm/1500 rpm
Bore	105 mm
Stroke	127 mm
Displacement	4.4 liter
• All engine horsepower (hp) are metric.	

### Weights

Operating Weight	7700 kg
------------------	---------

### Operating Specifications

Rated Load Capacity	3700 kg
Maximum Lift Height	7300 mm
Maximum Forward Reach	3763 mm
Top Travel Speed	40 km/h
Load at Max Height	2000 kg
Load at Max Reach	1250 kg

### Service Refill Capacities

	liter
Fuel Tank	150
Hydraulic Tank	90

### Tires

Standard	15.5/80-24 16 PR
----------	------------------

### Brakes

Service Brake	Servo assisted on front axle
Parking Brake	Dry disc on front axle

### Hydraulic System

Maximum System Pressure	250 bar
Maximum Pump Flow	113 liter/min
Pump Type	Variable Displacement Load Sensing Axial Piston Pump
Auxiliary hydraulic supply	
Intermittent	80 liter/min
Continuous	60 liter/min

### Transmission Speeds

Forward	km/h
1	7
2	12
3	21
4	32
5	40
Reverse	
1	7
2	12
3	21

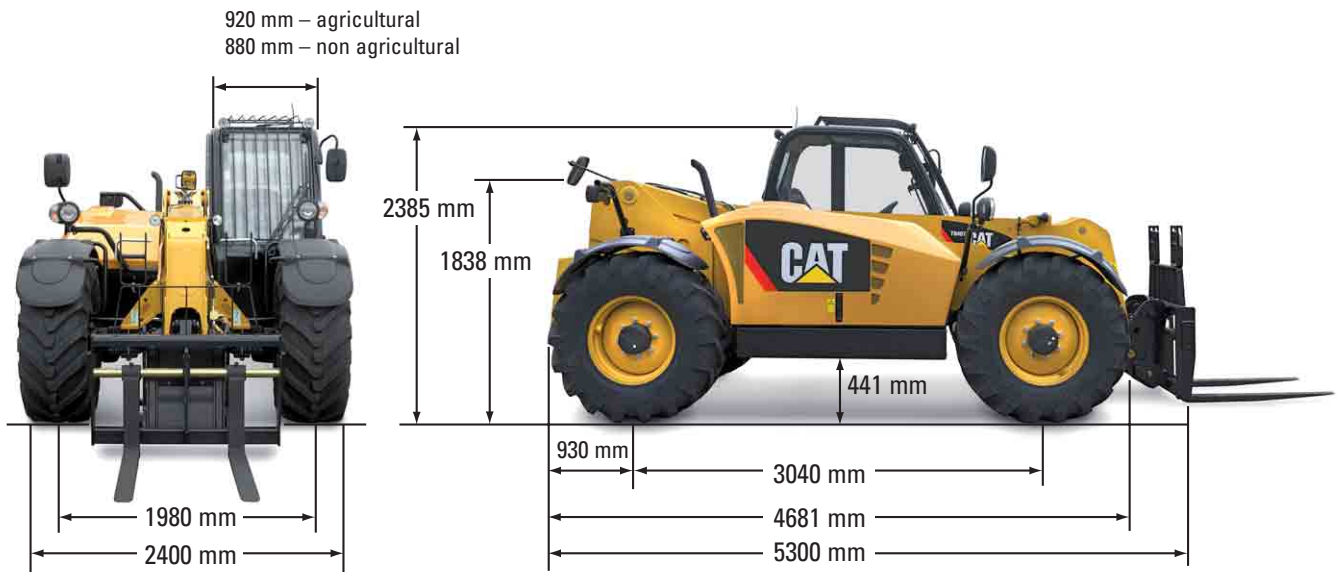
### Boom Performance

	seconds
Boom Up	8
Boom Down	6
Tele In	6
Tele Out	7
Crowd Forward (dump)	3
Crowd Backward	3
Combined	
Up and Out	13
Down and In	9
Drawbar Pull 74.5 kW	8500 kg
Drawbar Pull 93.1 kW	8900 kg

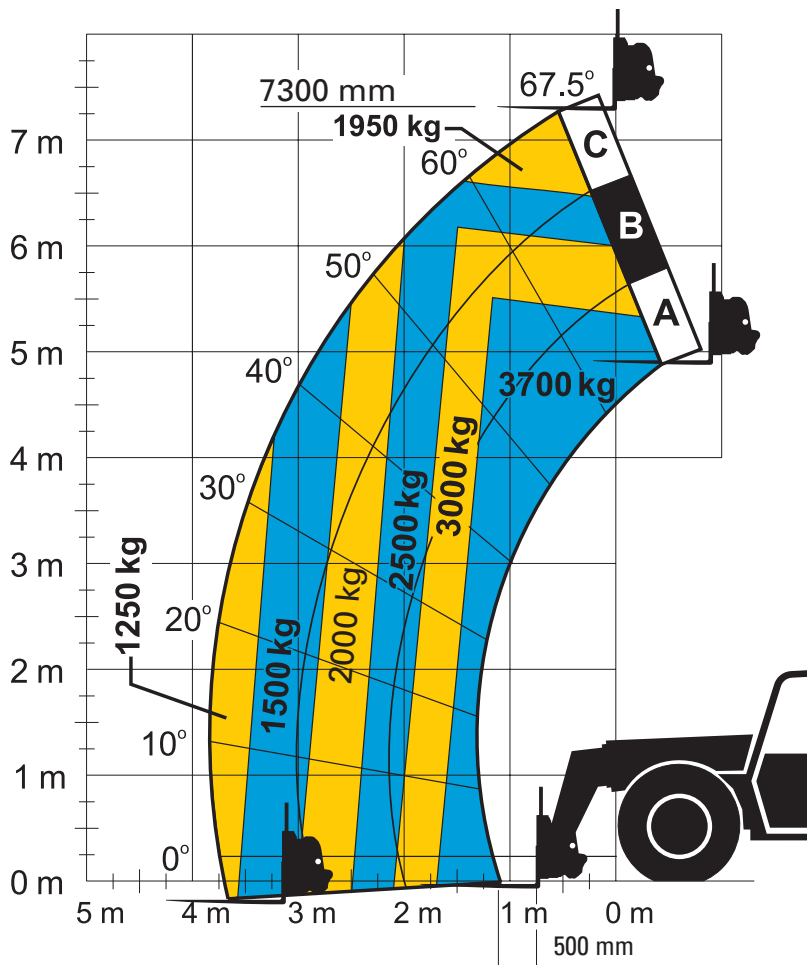
### Sound

Operator Sound	78 dB(A)
Exterior Sound - 74.5 kW Engine	106 dB(A)
Exterior Sound - 93.1 kW Engine	107 dB(A)

**Dimensions**



**Load Chart**



Due to continuous product improvements, machine specifications and/or equipment changes may be made without prior notification.

©2007 Caterpillar Inc. All Rights Reserved. CAT, CATERPILLAR, their respective logos, "Caterpillar Yellow" and the POWER EDGE trade dress, as well as corporate and product identity used herein, are trademarks of Caterpillar and may not be used without permission.